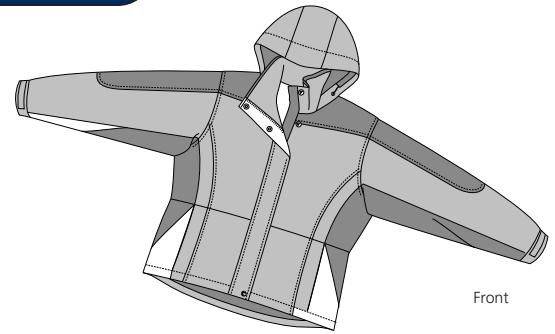
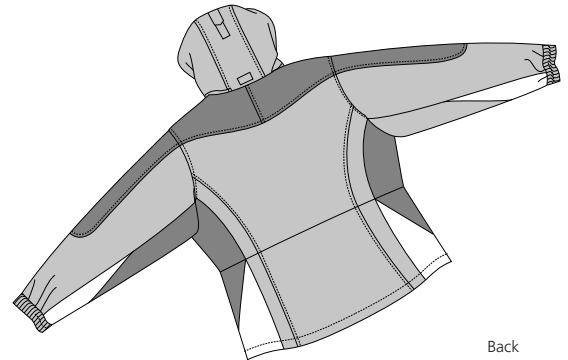


# Ladies Nootka Jacket

PORT AUTHORITY®



Front



Back

## L792

- \* 100% Ripstop nylon shell w/Taslan nylon accents \* 1500mm waterproof rating
- \* Seam-sealed for added waterproofing \* 2-ounce polyfill insulation in body
- \* 3-ounce polyfill in sleeves \* 100% polyester Sherpa fleece lined body
- \* Nylon lined sleeves \* Zip-off hood \* 4 zippered pockets \* Drop tail \* Storm flap
- \* Port Pocket™ engineering for easy embroidery accents \* Tailored for a feminine fit

### Care Instructions:

Machine wash cold. Do not dry clean.  
Do not iron. Do not bleach.  
Tumble dry low.

### Finished Measurements in Inches

Size	XS	S	M	L	XL	XXL	Plus 1X	Plus 2X
Length	28	28.5	29	29.5	30	30.5	31	31.5
Chest	40	42	44	48	51	54	56	61
Sleeve	31	32	33	34	35	36	37	38
Collar Ht	3.5	3.5	3.5	3.5	3.5	3.5	3.5	3.5
Chest Pkt	7	7	7	7	7.5	7.5	7.5	7.5
Areas for Decoration	Left Chest / Right Chest / Full Back			Port Pocket™				

Collar measured center back seam to top hem, Chest width 1" below arm hole, full circumference,  
Side pocket from top to bottom of opening, Body length from back neck seam to hem, Sleeve length from center back seam to hem

### Colors

	Black/Black
	Bright Pistachio/Graphite
	Regatta Blue/Navy
	Cadmium Orange/Graphite

### Please Note:

Colors shown are approximate and for reference only. For closest match see PMS colors, or for exact match, returnable samples and grommated samples are available.

### Color Chart

Jacket Colors	Black	Bright Pistachio	Cadmium Orange	Regatta Blue
Textile PMS	19-4305 TC	16-0435 TC	16-1350 TC	18-3921 TC
General PMS	433 C	7495 C	74137 C	648 C
Accent Color	Black	Graphite	Navy	
Textile PMS	19-4305 TC	18-0201 TC	19-4025TC	
General PMS	433 C	425 C	533C	